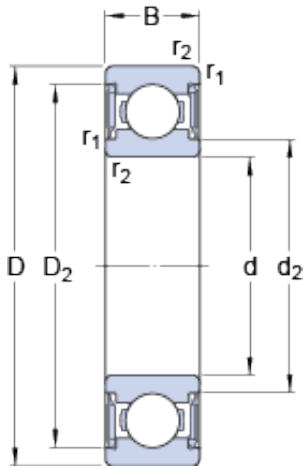




NTN bearing de Mexico, S.A.



12 mm x 28 mm x 8 mm skf W
6001-2RS1/VP311 Deep groove ball bearings

Bearing No. W 6001-2RS1/VP311

W 6001-2RS1/VP311 Bearing 2D drawings and 3D CAD models

Size	28x12x8 mm
Bore Diameter	28 mm
Outer Diameter	12 mm
Width	8 mm
d	12 mm
D	28 mm
B	8 mm
d ₂	16 mm
D ₂	25.15 mm
r _{1,2} - min.	0.3 mm
d _a - min.	14 mm
d _a - max.	15.5 mm
D _a - max.	26 mm
r _a - max.	0.3 mm
Basic dynamic load rating - C	4.4 kN
Basic static load rating - C ₀	2.4 kN
Fatigue load limit - P _u	0.102 kN
Limiting speed	16000 r/min
Calculation factor - k _r	0.03
Calculation factor - f ₀	13.2
Category	Single Row Ball Bearings
Inventory	0.0
Manufacturer Name	SKF
Minimum Buy Quantity	N/A



NTN bearing de Mexico, S.A.

Weight / Kilogram	0.019
Product Group	B00308
Enclosure	2 Seals
Precision Class	ABEC 1 ISO P0
Maximum Capacity / Filling Slot	No
Rolling Element	Ball Bearing
Snap Ring	No
Internal Special Features	No
Cage Material	Stainless Steel
Enclosure Type	Contact Seal
Internal Clearance	C0-Medium
Inch - Metric	Metric
Long Description	12MM Bore; 28MM Outside Diameter; 8MM Outer Race Width; 2 Seals; Ball Bearing; ABEC 1 ISO P0; No Filling Slot; No Snap Ring; No Internal Special Features; C0-Medium Internal Clearance; Stainless Ste
Other Features	Deep Groove NBR Seal Prelubricated
Category	Single Row Ball Bearing
UNSPSC	31171504
Harmonized Tariff Code	8482.10.50.68
Noun	Bearing
Keyword String	Ball
Manufacturer URL	http://www.skf.com
Manufacturer Item Number	W 6001-2RS1/VT378
Weight / LBS	0.052
Outer Race Width	0.315 Inch 8 Millimeter
Bore	0.472 Inch 12 Millimeter
Inner Race Width	0 Inch 0 Millimeter



NTN bearing de Mexico, S.A.

Outside Diameter	1.102 Inch 28 Millimeter
d_2	16 mm
D_2	25.15 mm
$r_{1,2}$ min.	0.3 mm
d_a min.	14 mm
d_a max.	15.5 mm
D_a max.	26 mm
r_a max.	0.3 mm
Basic dynamic load rating C	4.42 kN
Basic static load rating C_0	2.36 kN
Fatigue load limit P_u	0.102 kN
Calculation factor k_r	0.03
Calculation factor f_0	13.2
Mass bearing	0.02 kg