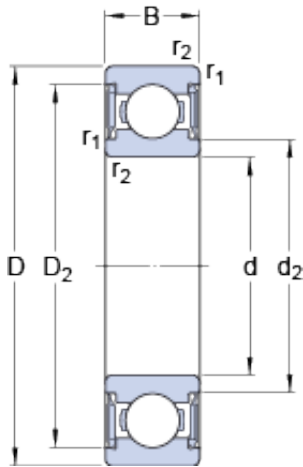




NTN bearing de Mexico, S.A.



9 mm x 30 mm x 10 mm skf W 639-2RS1 Deep groove ball bearings

Bearing No. W 639-2RS1

W 639-2RS1 Bearing 2D drawings and 3D CAD models

Size	30x9x10 mm
Bore Diameter	30 mm
Outer Diameter	9 mm
Width	10 mm
d	9 mm
D	30 mm
B	10 mm
d ₂	15.3 mm
D ₂	25.28 mm
r _{1,2} - min.	0.6 mm
d _a - min.	13 mm
d _a - max.	15.2 mm
D _a - max.	26 mm
r _a - max.	0.6 mm
Basic dynamic load rating - C	4.9 kN
Basic static load rating - C ₀	2.3 kN
Fatigue load limit - P _u	0.1 kN
Limiting speed	16000 r/min
Calculation factor - k _r	0.035
Calculation factor - f ₀	12.9
d ₂	15.3 mm
D ₂	25.28 mm
r _{1,2} min.	0.6 mm
d _a min.	13 mm



NTN bearing de Mexico, S.A.

d_a max.	15.2 mm
D_a max.	26 mm
r_a max.	0.6 mm
Basic dynamic load rating C	4.36 kN
Basic static load rating C_0	2.32 kN
Fatigue load limit P_u	0.1 kN
Calculation factor k_r	0.035
Calculation factor f_0	12.9
Mass bearing	0.035 kg